

N.W. 1/4 OF SECTION 34, T.7N., R.1W., S.L.B. & M.

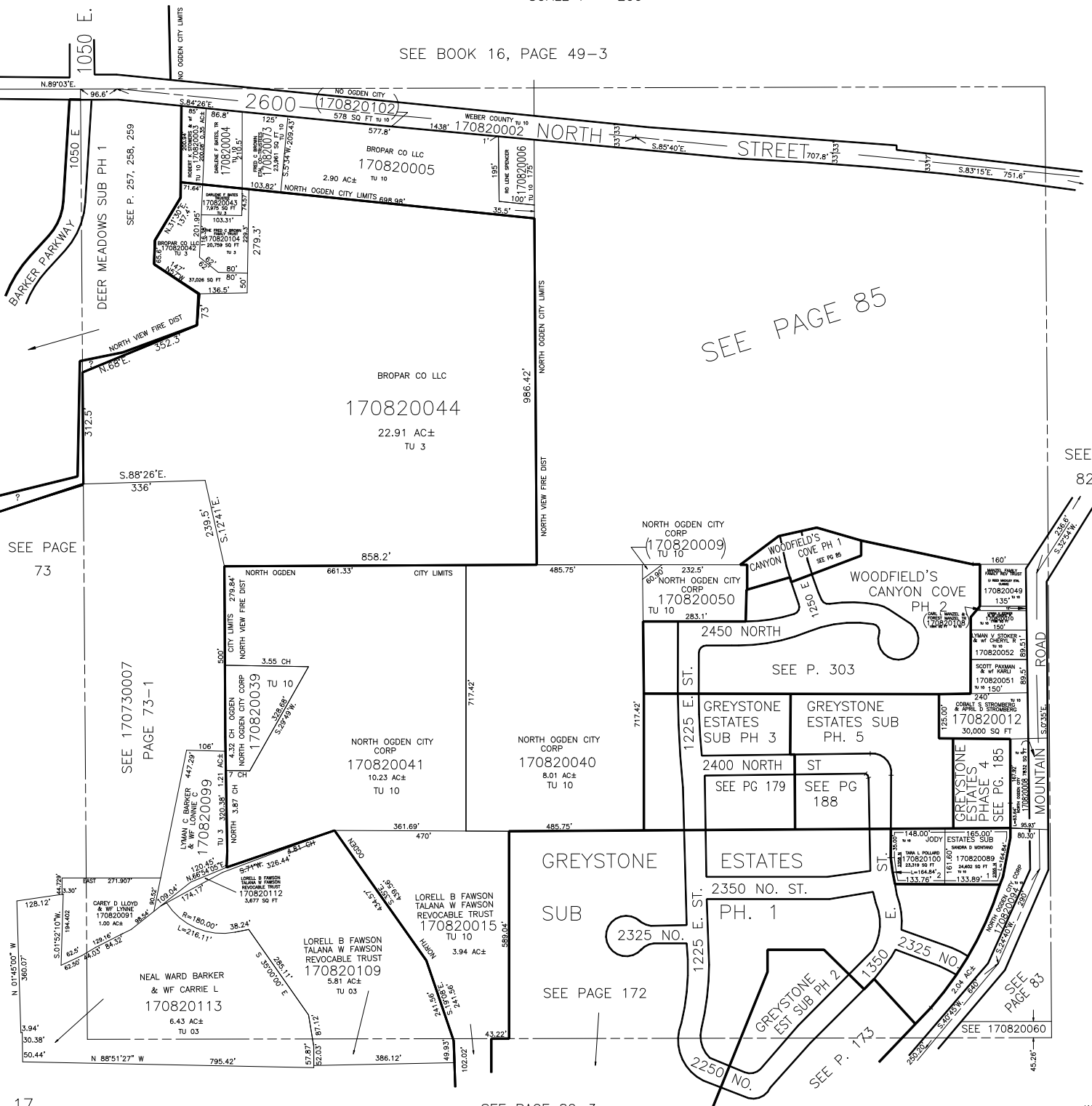
IN NORTH OGDEN CITY & NORTH OGDEN DISTRICT

TAXING UNIT: 03, 10, 355

SCALE 1" = 200'

PREFIX: 17-082

SEE BOOK 16, PAGE 49-3



SEE PAGE 85

SEE PAGE 82-1

SEE PAGE 73

SEE 170730007 PAGE 73-1

SEE PAGE 172

SEE PAGE 83

SEE PAGE 82-3